

GIS Edition
ECUADOR
2010 CENSUS

- 100% population coverage
- 50,201,515 data points
- ADM 6 for 40,649 census units
- 1,235 census variables

More than numbers. Census data provides unparalleled insight into the lives of individuals. East View presents the Ecuador 2010 Census as part of the East View Global Census Archive® (GCA). The Ecuador 2010 Census addresses a wide range of topics at the highest level of detail possible.

Making information available. When initially acquired, the census data is stored in a complex database structure, with attribute descriptions in Spanish, limiting access to those with significant database management and programming experience. East View simplifies access, formatting the collection into an easy-to-use geodatabase which can be visualized using any GIS software and providing a comprehensive guide. Additionally, East View provides the original census documentation, allowing researchers to see first-hand how the data was gathered.

Note: The Ecuador 2001 Census (GIS Edition) is also available through GCA

CENSUS OVERVIEW

Year: 2010	Polygons at ADM: 40,649
Population Coverage %: 100	Number of Questions: 91
Geography Coverage %: 100	Number of Answers: 1,235
Smallest Geography Name: Sectores	Data Points: 50,201,515
ADM Level: 6	Urban/FG: FG

- Notes**
- Population Coverage % indicates the percentage of total population of the country during the census year that this census covers
 - Geography Coverage % indicates the percentage of the total area of the country covered by the ADM polygons in this census
 - Urban/FG indicates if this census provides Full Geographic (FG) coverage or if coverage is limited to Urban (U) or populated places

DELIVERABLES

The Ecuador 2010 Census has 100% population coverage, over 50 million data points, and consists of:

Geodatabase

- Intuitive organization of census data
- Administrative boundary vector data at ADM 6 (Sectores) for 40,649 census units
- Vector and aggregated tabular data at the Sectores level

Shapefiles

- All vector and census data in ESRI Shapefile format

Census Guide

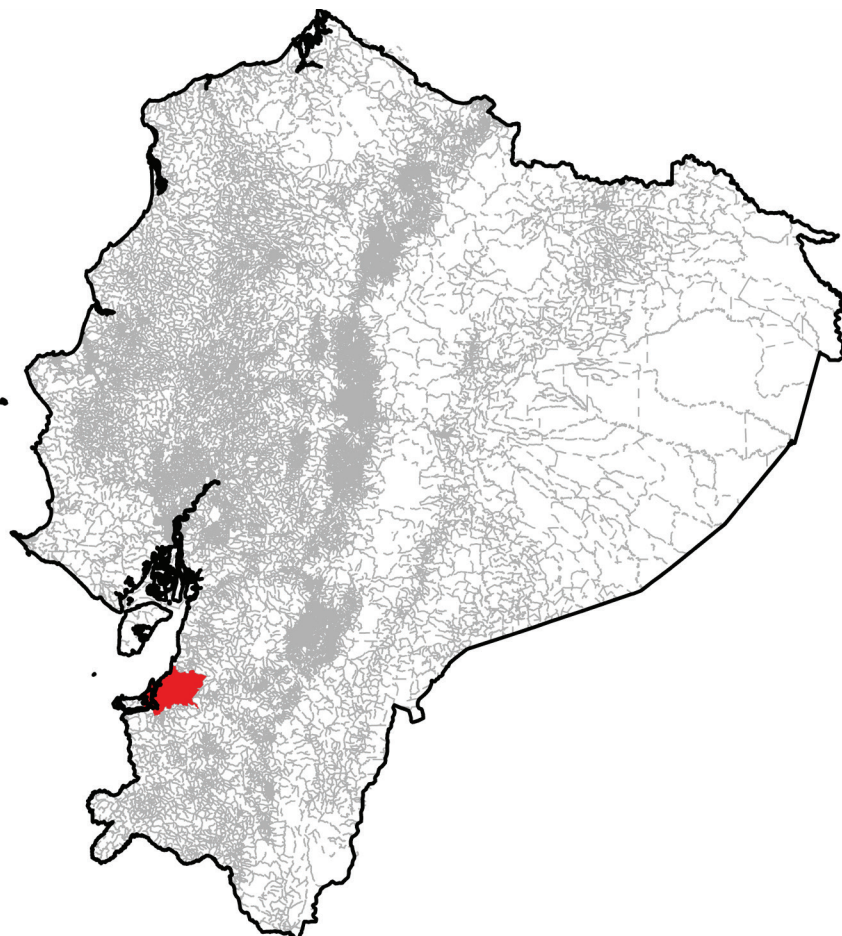
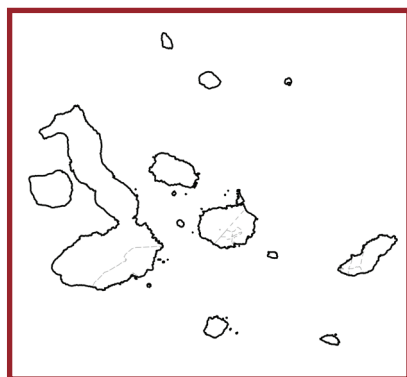
- Detailed descriptions for 1,235 census variables

Original Census Documentation and Database

- Delivered in native format
- Census questionnaires

Metadata

- Full attribute level metadata in FGDC ISO format



ADM 6/0 boundaries for all of Ecuador, with inset detail of the Galapagos; area in red, over Machala, is available as sample data

CENSUS QUESTIONS

Below is a representative sample of census questions included in the Ecuador 2010 Census:

1. Demographic

Relationship / Sex / Birth data and age / Marital status / Fertility

2. Migration

Place of birth / Citizenship / Duration of residence / Usual residence

3. Social

Literacy / Educational attainment / Field of Education / Language / Ethnicity and indigenous peoples / Disability

4. Economic

Activity status / Occupation / Industry / Status in employment / Place of work

5. Housing

Living quarters / Location of living quarters / Occupancy status / Rooms / Bedrooms / Useful floor space / Water supply system / Drinking water / Toilet / Sewage disposal / Bathing facilities / Kitchen / Fuel used for cooking / Lighting and/or electricity / Solid waste disposal / Heating / Hot water / Piped gas / Use of housing unit / Number of occupants / Building type / Construction material of outer walls / Construction material of floor, roof / Elevator / Farm building / State of repair

For more information about the Ecuador 2010 Census, including the availability of corresponding non-GIS materials (published results, supporting questionnaires, other census ephemera, etc.), please contact info@eastview.com