

**EAST VIEW**

# Global Census Archive<sup>®</sup>

Historical and current census publications and data from around the world for scholarship and policymaking

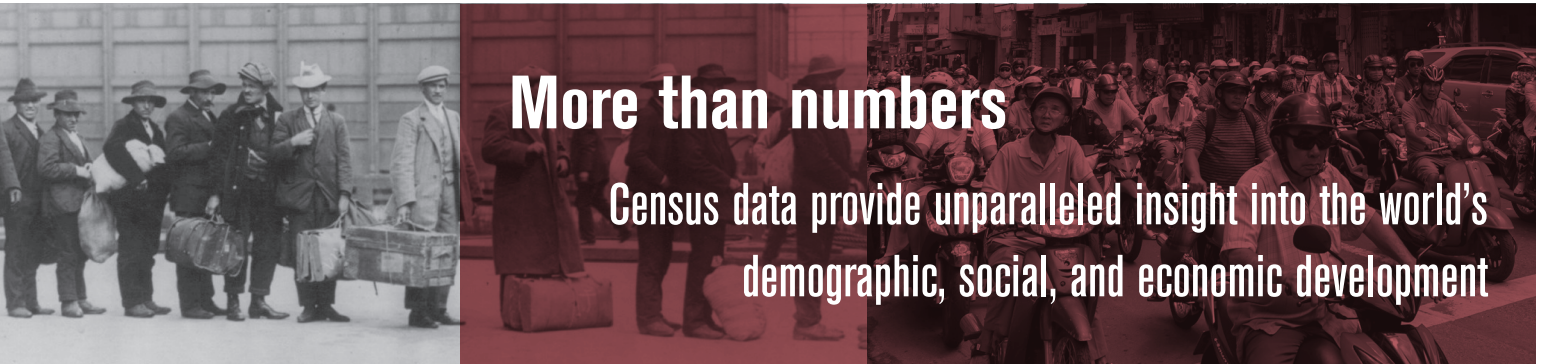


Uncommon Information  
Extraordinary Places



**Census information, in all forms, matters**—now more than ever—with conflicts, natural disasters, climate change, and global population growth (or contraction in some cases) driving massive human migration, infrastructure development, and public policy challenges.

The East View Global Census Archive® (GCA) is an innovative program to collect official data and publications issued by the national census authorities of more than 200 countries, from the early 19th century to the present day, providing a key resource for scholars and analysts to find current and historical census data to support critical research into our changing world.



## More than numbers

Census data provide unparalleled insight into the world's demographic, social, and economic development

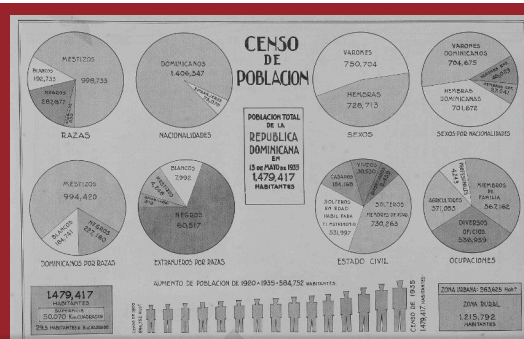
### Why Global Census Archive?

GCA provides a single platform experience to explore the world's census publications: all countries and regions, the complete depth of published census materials, including original census publications in e-book form, as well as modern tabular data in Excel format and GIS datasets for advanced users.

This truly global collection contains all available primary source and official census publications associated with a given census. GCA currently contains millions of pages of publications and billions of data points in GIS format, with more content continually added as new censuses are produced across the globe. Users can browse historical publications as full-image, full-text e-books (in any language), download tabular data in Excel format (for born-digital publications), and download GIS data (e.g., shapefiles of administrative boundaries)—all from a unified discovery interface.

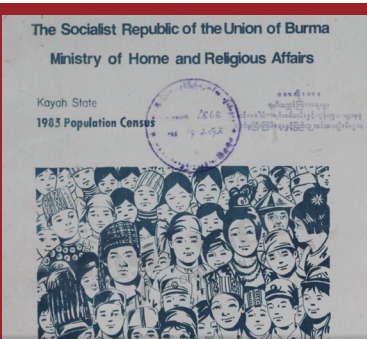
GCA simplifies access to and increases the discoverability of demographic data from the world's census publications. Research and analysis is improved with e-books that are fully machine-searchable, with full-image, cover-to-cover browsing of original census publications (as well as important supplementary primary source materials such as original census questionnaires and ephemera), plus the ability to download a variety of GIS and tabular data files to complement existing modern census collections.

Learn more at [eastview.com/gca](http://eastview.com/gca) or contact [info@eastview.com](mailto:info@eastview.com)



CENSUS OF SIERRA LEONE 1891  
 Table No. 1.

District.	White.			Black.		
	Males	Females	Total.	Males	Females	Total.
Eastern District	169	30	199	16142	13692	29834
Pariah St. George	-	-	-	2100	2113	4213
Eastern Division	1	1	2	3982	2904	6886
Mountain	2	2	4			
Total Freetown	171	32	203	21324	18799	40123
Eastern District	1	1	2	6494	6186	12680
Western	-	-	-	2876	2565	5441
Total Peninsula	172	32	204	30694	27550	58244
Sherbro District	19	1	20	7324	6194	13518
Isles de Los	-	-	-	814	764	1578
Tassoh	-	-	-	680	360	1040
Kaikoneh	-	-	-	71	19	90
Factories S. L. River	-	-	-	26	9	35
Back Papelle	-	-	-	75	61	136



# 200+ countries Early 19th century–current

## Over 2,000 censuses and growing



### What kinds of materials are included in Global Census Archive?

Global Census Archive provides a centralized platform for all available published content that accompanies the release of a census. While the availability and type of materials will vary by country and year, there are three broad categories for the types of materials that appear in Global Census Archive: publications, tabular data, and GIS data.

#### Publications

It's not just books, especially in the modern era, where census publications now range from questionnaires used by the census authority to other materials, such as analytical results, maps, and public awareness brochures. Below is a list of some examples of publications that can be found within a census:

- Official results (analytical)
- Questionnaires
- Survey forms
- Maps, atlases
- Methodological and preparatory works
- Public campaign literature
- Newspaper and journal articles
- Conference materials
- Legislative works
- MARC records (available upon request)

#### GIS Data

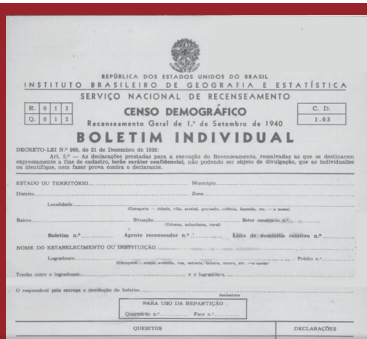
Since the 2000s, authorities around the world have increasingly made their census outputs available as geographic information system (GIS) data. EastView acquires the official outputs and formats the data into an easy-to-use geodatabase. These East View-created datasets are tailor-made for instant analysis and visualization using any GIS software. GIS datasets on the GCA platform include:

- Administrative boundary vector data
  - » Feature classes
  - » Shapefiles
- Full attribute level metadata
- A GIS data dictionary with native language and English-translated variables

All data and files are hosted on the platform itself. No need to worry about storing data within your institution. Researchers have easy access to GIS data and can download individual components of the dataset with the click of a button.

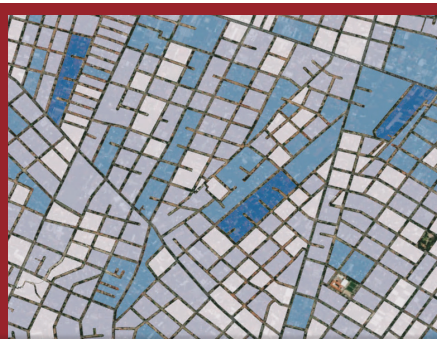
#### Tabular Data

Global Census Archive presents the original, unaltered tables as offered in the original book-style publications as PDFs that are both viewable directly on the platform and can be downloaded locally. Furthermore, GCA also offers digital files of tabular data as made available by a nation's official census authority. These Excel files are downloadable straight from the GCA platform to a researcher's device where more robust statistical analysis can be performed.



Домаћинства према броју чланова, по насељеним местима  
Households by number of members, by settlements

Регион Област Град – општина Насељено место	Укупно Total	Са 1 чланом With 1 member	2	3	4	5	Са 6 и више чланова With 6 or more members
<b>РЕПУБЛИКА СРБИЈА</b>	248788	55487	63891	47842	44427	19758	186053
Грaðа	153386	30052	39450	31815	29579	10578	67697
Остала	95402	20415	24164	15849	15837	9178	98356
<b>СРБИЈА - СЕВЕР</b>	130290	31319	34032	26070	23756	8911	60709
Грaðа	83106	23366	24672	19281	16892	5674	32676
Остала	37184	7953	9420	6782	6864	3247	28033
<b>Београдско рејон</b>	486423	14873	18006	12873	11041	4026	26975
Грaðа	507076	13058	13249	10709	9723	3009	17056
Остала	99357	18065	23577	18264	19618	10056	9777
<b>Београдска област (Град Београд)</b>	684423	148973	18006	128973	11041	40265	26975
Грaðа	507076	13058	13249	10709	9723	3009	17056
Остала	99357	18065	23577	18264	19618	10056	9777
<b>Баранско</b>	8800	1966	2281	1439	1493	853	888
Остала	8800	1966	2281	1439	1493	853	888
<b>Апатинско</b>	239	61	53	31	31	30	33
<b>Београд</b>	799	62	79	40	53	27	273

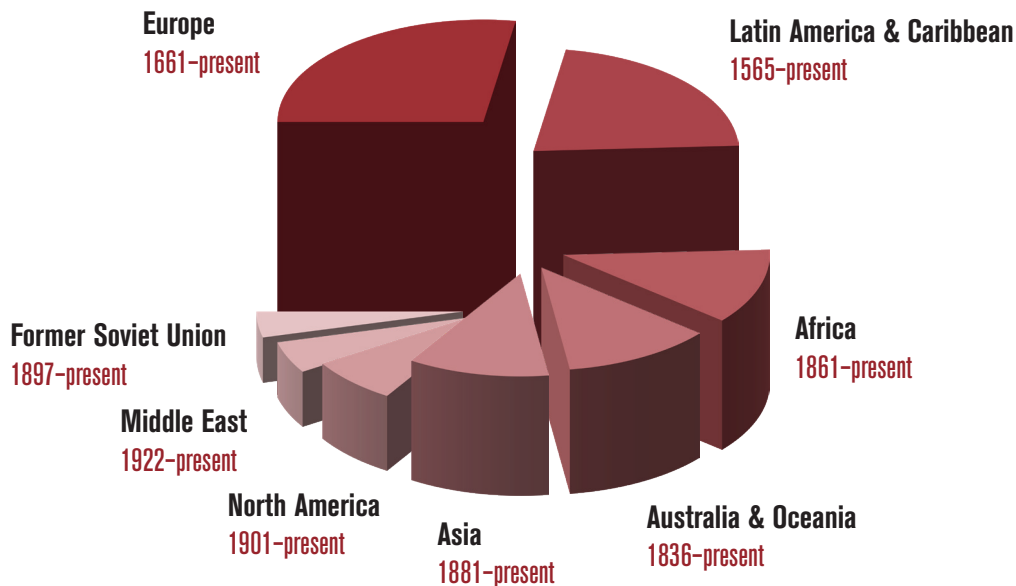


استمارة رصد خصلص

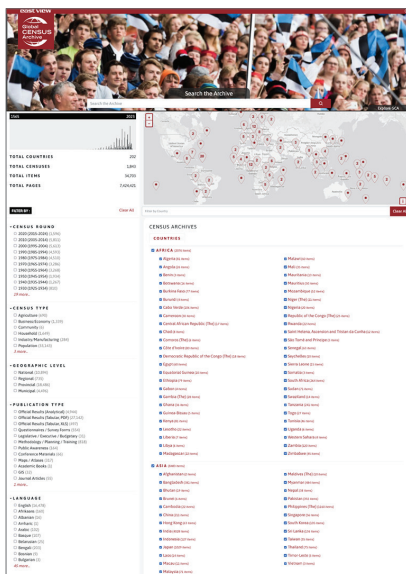
اسم المنطقة	رقم المنطقة	رقم التعداد	رقم التعداد	رقم التعداد	رقم التعداد	رقم التعداد	رقم التعداد	رقم التعداد	رقم التعداد
اسم المنطقة	رقم المنطقة	رقم التعداد	رقم التعداد	رقم التعداد	رقم التعداد	رقم التعداد	رقم التعداد	رقم التعداد	رقم التعداد

## What does Global Census Archive cover?

Global Census Archive is truly global, featuring coverage of all regions with over 200 countries and dozens of languages represented. Most of the content in GCA is from the early 19th century to the present day, with some material dating as far back as the 16th century. GCA continues to grow as more countries and census years are sourced. If there is a particular country or census year of interest, please contact [info@eastview.com](mailto:info@eastview.com) to discuss availability.



Inquire about available countries and census years at [info@eastview.com](mailto:info@eastview.com)



## Get to know the GCA platform

East View's Global Census Archive program features a robust custom platform that hosts censuses from around the world. The GCA platform currently includes over 2,000 censuses and 8 million pages of content, with new titles continuously being added.

### GCA Platform Features

- IP authentication
- Usage statistics
- Unlimited simultaneous users
- Cross-searching across censuses from around the world that are hosted on the platform
- Full-image/full-text content
- Page-level digitization with hit-term highlighting
- Full-screen browsing
- Clipping and text extraction tools
- Citation generator in MLA, APA, Chicago, and RIS format