

**More than numbers.** Census data provides unparalleled insight into the lives of individuals. East View presents the Russia 2010 Census as part of the East View Global Census Archive® (GCA). The Russia 2010 Census addresses a wide range of topics at the highest level of detail possible.

**Making information available.** When initially acquired, the census data is stored in a complex database structure, with attribute descriptions in Russian, limiting access to those with significant database management and programming experience. East View simplifies access, formatting the collection into an easy-to-use geodatabase which can be visualized using any GIS software and providing a comprehensive guide. Additionally, East View provides the original census documentation, allowing researchers to see first-hand how the data was gathered.

## CENSUS OVERVIEW

<b>Year:</b> 2010	<b>Polygons at ADM:</b> 21,659
<b>Population Coverage %:</b> 100	<b>Number of Questions:</b> 39
<b>Geography Coverage %:</b> 100	<b>Number of Answers:</b> 139
<b>Smallest Geography Name:</b> Selsoviet	<b>Data Points:</b> 3,010,601
<b>ADM Level:</b> 3	<b>Urban/FG:</b> FG

**Notes**

- Population Coverage % indicates the percentage of total population of the country during the census year that this census covers
- Geography Coverage % indicates the percentage of the total area of the country covered by the ADM polygons in this census
- Urban/FG indicates if this census provides Full Geographic (FG) coverage or if coverage is limited to Urban (U) or populated places

## DELIVERABLES

The Russia 2010 Census has 100% population coverage, over 3 million data points, and consists of:

**Geodatabase**

- Intuitive organization of census data
- Administrative boundary vector data at ADM 3 (Selsoviet) for 21,659 census units
- Vector and aggregated tabular data at the Selsoviet level

**Shapefiles**

- All vector and census data in ESRI Shapefile format

**Census Guide**

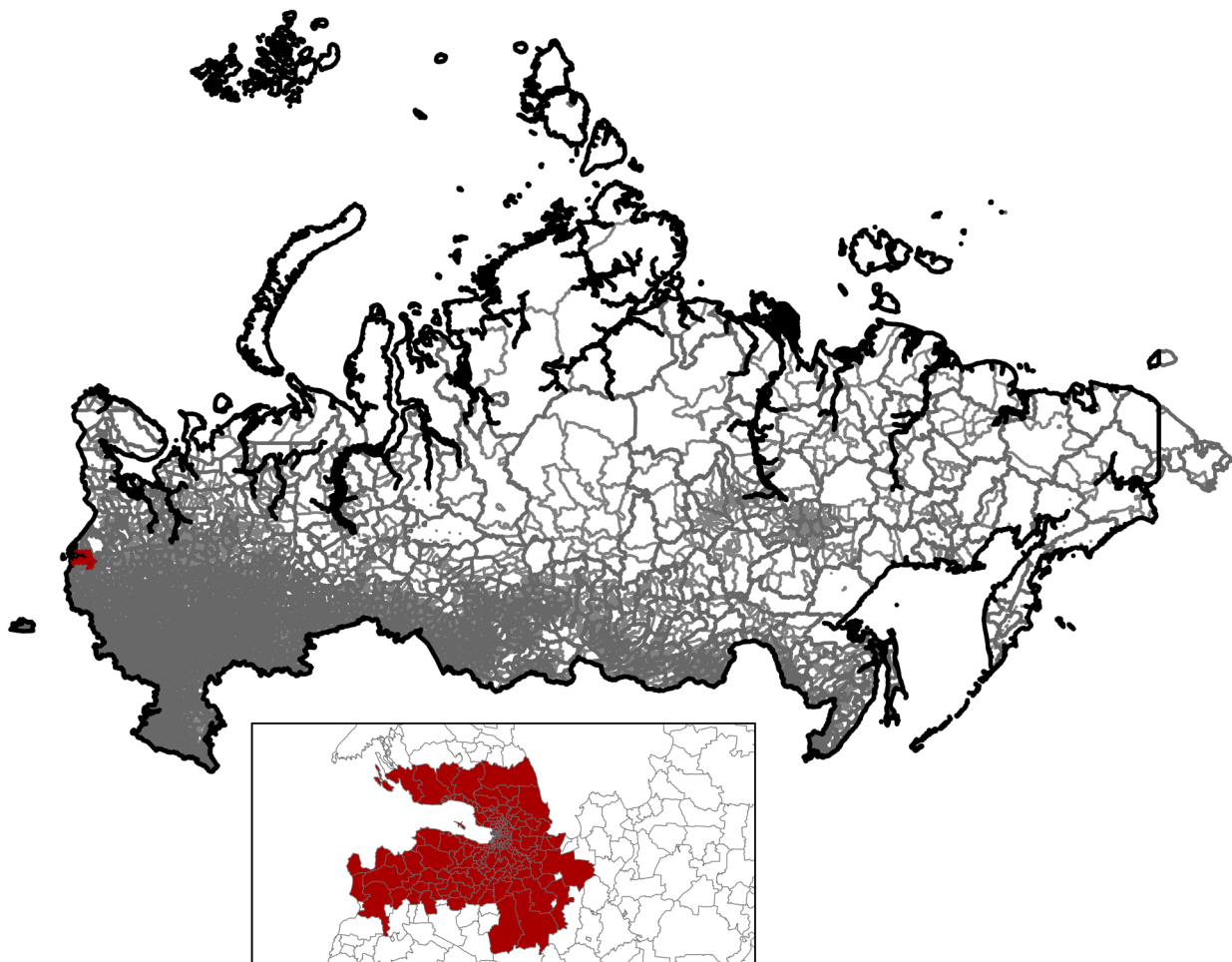
- Detailed descriptions for 139 census variables

**Original Census Documentation and Database**

- Delivered in native format
- Census questionnaires

**Metadata**

- Full attribute level metadata in FGDC ISO format



ADM 3/2/0 boundaries for all of Russia; inset detail over St. Petersburg with area in red available as sample data

## CENSUS QUESTIONS

Below is a representative sample of census questions included in the Russia 2010 Census:

### 1. Demographic

Sex / Birth data and age

### 2. Migration

Ethnicity

### 3. Social

School attendance / Disability

### 4. Economic

Occupation / Income / Place of work

### 5. Housing

Useful floor space / Number of occupants /  
State of repair / Natural gas access

### 6. Transportation

Transportation network

For more information about the Russia 2010 Census, including the availability of corresponding non-GIS materials (published results, supporting questionnaires, other census ephemera, etc.), please contact [info@eastview.com](mailto:info@eastview.com)